

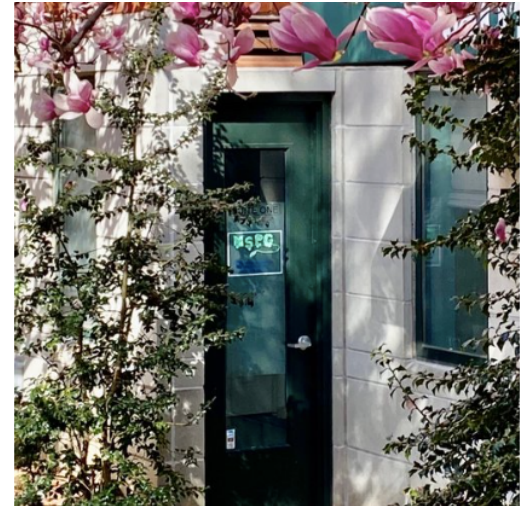
# METROPOLITAN SPEECH PATHOLOGY GROUP

4601 Connecticut Ave, N.W. Suite One • Washington, DC 20008 • 202/237-2927 • Fax 202/244-8250

## **We're Hiring!**

### Speech-Language Pathologist Metropolitan Speech Pathology Group

MSPG, an established private practice in upper Northwest DC and accessible by the Metro Red Line at Van Ness, is seeking an energetic, skilled part-time DC-licensed speech-language pathologist.



#### **Requirements:**

- Current DC Speech-Language Pathology License
- Current ASHA Certification
- Availability between 3:30 - 7:00pm two to three days a week and/or Saturdays

#### **Benefits:**

- Flexible schedule
- Private Office
- Be a part of a friendly, collaborative, and enthusiastic team

For further information about this hourly position, please contact our practice manager, Catherine Clark, at [office@metsspeech.com](mailto:office@metsspeech.com)

**Visit Our Website:** [metsspeech.com](http://metsspeech.com)

**SPEECH-LANGUAGE & LITERACY SERVICES**  
e-mail: [office@metsspeech.com](mailto:office@metsspeech.com) • website: [www.metsspeech.com](http://www.metsspeech.com)

